

**WEC**

***GROUP***

Introducing the WEC Group of companies



## CONTENTS

Introducing the WEC Group	01
WEC Fabrication	02
WEC Laser	04
WEC Machining	06
WEC Heavy Machining	08
WEC Special Projects	10
WEC Waterjet	12
WEC Plasma	14
WEC Powder Coating	16
WEC Rail	18
WEC Nuclear	20
WEC CCTV	22
MTL Advanced	24
HTA Group	26
Sherburn Metalwork	28
5750 Components	30
m-tec architectural division	32
ATS (Advanced Tank Solutions)	34
Laser Profiles	36
WEC Training Academy	38
WEC Quality	40



## INTRODUCING WEC GROUP

Founded in 1979, WEC Group Ltd is one of the largest engineering and fabrication companies in the UK. With over 900 employees, 700,000+ sq. ft. of manufacturing floor space, the Group consists of fifteen specialist divisions covering different aspects of subcontract engineering, plus its own in-house apprentice training academy.



**750,000 SQ FT**  
OF MANUFACTURING FLOORSPACE



**900+**

HIGHLY SKILLED STAFF

**10**

MANUFACTURING SITES

**15**

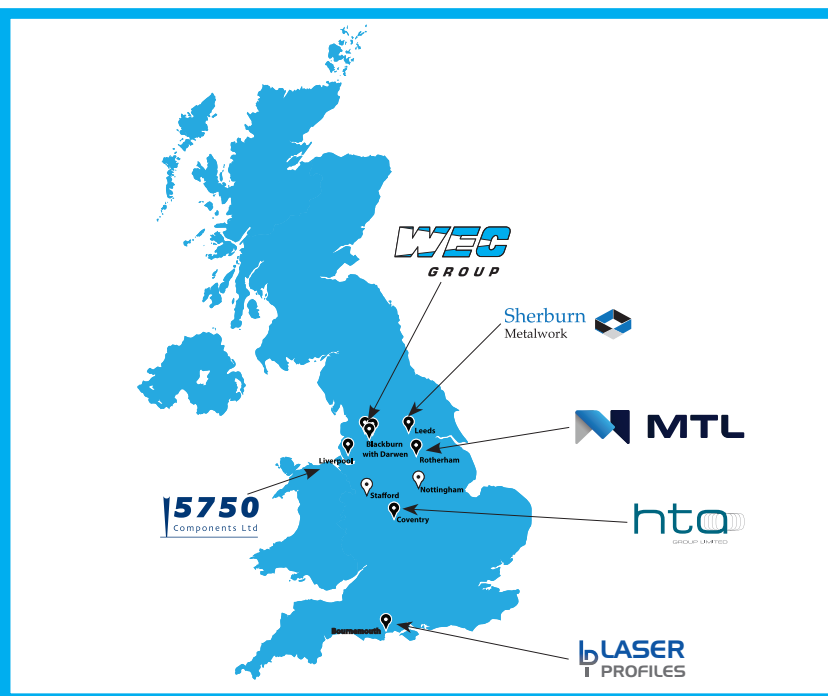
SPECIALIST DIVISIONS



**150+** SKILLED WELDERS



**90+** APPRENTICES



**30+** PROFILING MACHINES

**25+** PRESS BRAKES

**40+** CNC MACHINES

**12+** ROBOT WELDERS







“ From sheet metalwork  
through to small, medium  
and large fabrications ”





## FABRICATION



### WEC Fabrication

We offer a one-stop-shop service at our state-of-the-art facilities across the UK. Our skilled engineers are conversant with all aspects of fabrication, from fine-line sheet metalwork through to small, medium and large fabrications.

Our clients require both bespoke and batch work fabrication in various metals including mild steel, boiler plate, corten, 304/316/2205/Duplex stainless steel, monel, titanium, copper, nickel and invar; we've even been known to work in platinum!

Certified to ISO 9001:2015, ISO 3834, EN15085, ISO 14001 & ISO 45001 and with over 40 years' specialised experience in dealing with all metals and alloys, WEC Fabrication provides a comprehensive computer design, manufacture and installation service to all aspects of the engineering sector.

Working to BS/EN 1090 standards and with over 150 skilled welders, craneage facilities of up to 30 tonnes and a wide range of modern fabrication equipment including robotic welding, we offer TIG, MIG and arc coded welding as well as sheet metalwork, large machining & heavy engineering.

All coded welding is undertaken in accordance with ISO 15614 / ISO 9606 and ASME, these are carried out through top leading UKAS and PED approved notified bodies such as, TWI (The Welding Institute), Lloyds Register, Bureau Veritas, Zurich and Royal Sun Alliance.

With an in-house design team utilising the latest software, we can provide support for any project from concept to completion. We also provide an installation service with CSCS qualified construction installers when required.

[www.welding-eng.com](http://www.welding-eng.com)

### Aerospace

WEC Group has been heavily involved with the Aerospace industry for many years, supplying jigs and fixtures for various aircraft assembly facilities for large first tier manufacturers such as Airbus and Rolls Royce. We possess a wealth of experience in the fabrication of mould tools in invar, aluminium and mild steel, as well as blast baskets for engine test beds. We also specialise in the fabrication and erection of specialist ground support platforms for assembly workers. With skilled coded welders and NDT inspection in place, WEC Group is ideally placed to provide solutions for the aerospace industry.

### Pressure Vessels

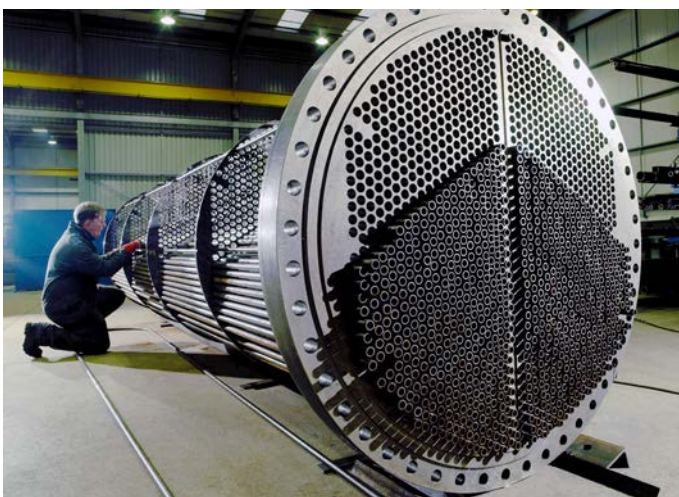
We are involved in various pressure vessel projects including nuclear fluorine cells. All work is carried out in line with PED 97/23/EC standards and manufactured to BSEN5500 and ASME standards.

### Nuclear

A combination of our highly-skilled workforce, detail design and 3D solid modelling techniques allow us to provide a fully comprehensive service to the Nuclear industry.

This is strengthened by a wealth of experience in lifetime quality records (LTQR) and non-destructive testing (NDT) methods, which together enable us to provide heavy engineering and large fabrication services to the industry.

We hold various red stamped approved procedures long with 70 red stamped approved WPS.

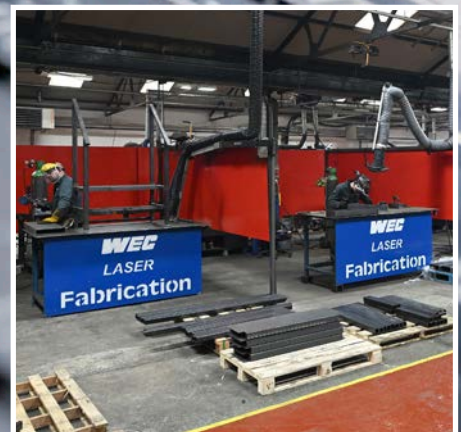






**\*NEW\* 24KW Flat Bed Fiber Laser**

“  
With 23 flat bed lasers and  
3 tube cutting machines we are  
one of the largest laser cutting  
operations in the UK  
”







**LASER**



## WEC Laser

WEC Laser has grown from strength to strength and we are now the UK's largest sub-contract laser cutting and sheet metalwork company.

Continuous investment in the latest laser cutting technology is the key to the division's dramatic growth over the past few years, and we have invested over £5m in fiber laser machines over the past 3 years to retain our competitive edge.

WEC Laser now boasts an enviable capacity list which includes 23 flat-bed lasers, 3 tube lasers, 25+ press brakes as well as full in-house fabrication, machining and powder coating facilities.

Our laser cutting machines enable us to cut up to 4m x 2m sheet size and our new 24Kw fiber lasers are capable of laser cutting stainless steel, mild steel, and aluminium up to 40mm thickness, as well as copper and brass of up to 16mm and 12.7mm thick respectively.

We operate our own fleet of lorries and can offer very competitive leadtimes for small batch and large volume orders alike. We can also offer a fully comprehensive contract management service, with kanban systems and regular Just-In-Time deliveries wherever required .

## Fibre Laser Technology

WEC Laser has recently replaced all their old CO2 Lasers with the very latest fibre laser technology, a more environmentally friendly process, which gives us the cutting edge on thin gauge materials and thick plate alike, with unrivalled cutting speeds and accuracy.

In our line of business, flexibility is key and we have long since adopted a 24/7, 3 shifts working pattern across all our sites to maximize our productivity and therefore reduce the cutting costs for our customers.

## Tube Cutting

In addition to our traditional flatbed laser cutting services, we also supply laser cutting of tube, box section and open profiles. Our state-of-the-art fibre tube lasers enable us to cut parts of up to 8.5m in length with a maximum envelope size of 240mm diameter for round tube and 200mm diameter for square box section.

## Sheet Metal Fabrication

With 25+ press brakes, 150+ welders, clean welding rooms for aluminium and stainless steel, and all the main welding certifications, we are the partner of choice for OEMs looking to outsource all their sheet metalwork requirements.

[www.laser-eng.com](http://www.laser-eng.com)

## Our Laser Cutting division:





“ Aerospace AS9100 Accredited CNC Machining ”

**\*NEW\* 12.5m x 3m x 1.5m Correa Axia**







## WEC Machining Ltd

WEC Machining Ltd manufactures precision machined components and assemblies to customer specifications.

Following substantial investment in the latest CNC machinery, WEC Machining Ltd is able to offer a wide range of sub-contract multi axis CNC machining services. We provide our customers with a CNC Milling capability of up to 12.5m in length alongside Horizontal Pallet loaders for cost-effective batch manufacturing. CNC lathes with both driven tooling and sub-spindle options provide turning capacity up to 3.8 metres in length, 920mm diameter.

We've also invested in CNC Mill Turn Centres with both driven tooling and sub-spindle options which enables the machining of complex parts in one hit. Complemented by a CAD/CAM system to minimise programming and downtime, the shop floor can provide a rapid response to customer requirements.

Recent investments in the latest sliding head turning technology also enable us to supply large batches of small turned parts at very competitive rates.

Operating from a purpose built 33,000 sq. ft. production facility purposely fitted out to create a modern, fully functional machine shop, WEC Machining Ltd carries out entire projects in-house.

This allows us to provide a fast, comprehensive and cost-effective service, meeting the challenging specifications and schedules called for by our customers.

Complementing all aspects of component and sub-assembly manufacture, we have a clean room assembly facility providing mechanical, electromechanical and hydro-mechanical assemblies. We also offer kitting out services to Tier 1 and Tier 2 customers.

## Workshop Machinery and Lever Presses

Our WEC Machining division are also the original manufacturers of our Clarendon by WEC workshop machinery range (previously known as Hi-Spec Machinery). We offer a full range of heavy duty abrasive workshop machinery such as grinders, belt sanders, brushes/polishers, dust extractors, bridge presses, arbor presses and assembly bench presses for educational and industrial organisations.

[www.wec-machining.com](http://www.wec-machining.com)

## AS / EN 9100 Aerospace Accreditation

WEC Group have achieved full compliance with AS/EN 9100 for Machining in accordance with the following scope: CNC & conventional machining, turning, milling, minor assemblies including inserts, bushes and bearings.



ISO  
9001  
Quality  
Management

AS/EN  
9100 Series  
Aerospace

FS 605930

FS 606253







Large and heavy machining  
services to the UK's highest  
standards





## HEAVY MACHINING



### WEC Heavy Machining

Our Heavy Machining division is located in Blackburn, Lancashire and complements our Fabrication operations by providing large and heavy machining services to the UK's highest standards. We can supply complete machined fabrications as well as a standard subcontract service to our clients for parts of up to 40m in length and 40t in weight.

The division continually invests in the latest machining equipment and a highly skilled workforce to ensure that the work produced is of the highest quality for our customers.

Thanks to investments in the latest travelling column milling technology, we now boast seven large machines with maximum bed size of 12m x 5m x 2m (or 12m x 2.5m x 3m).

We provide large and heavy machined components to a broad range of industries including niche sectors requiring specialist and high accuracy parts such as nuclear, defence, aerospace, oil & gas and marine.

The quality and accuracy of the milled components produced by WEC Heavy Machining is always of the highest standard.

Our increasing capacity enables us to provide a fast, comprehensive and cost-effective service and meet the challenging specifications and schedules called for by our customers.

[www.wec-group.com/large-machining.html](http://www.wec-group.com/large-machining.html)



### Europe's Largest Sub Contract Heavy Machining and Nuclear Fabrication Facility

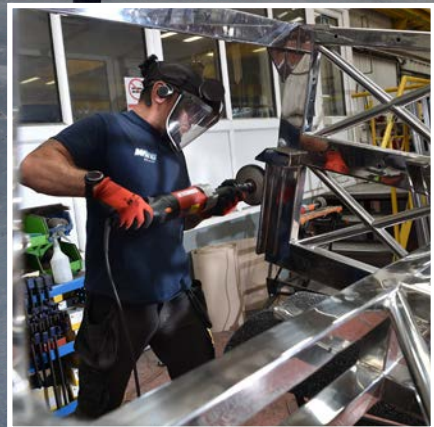
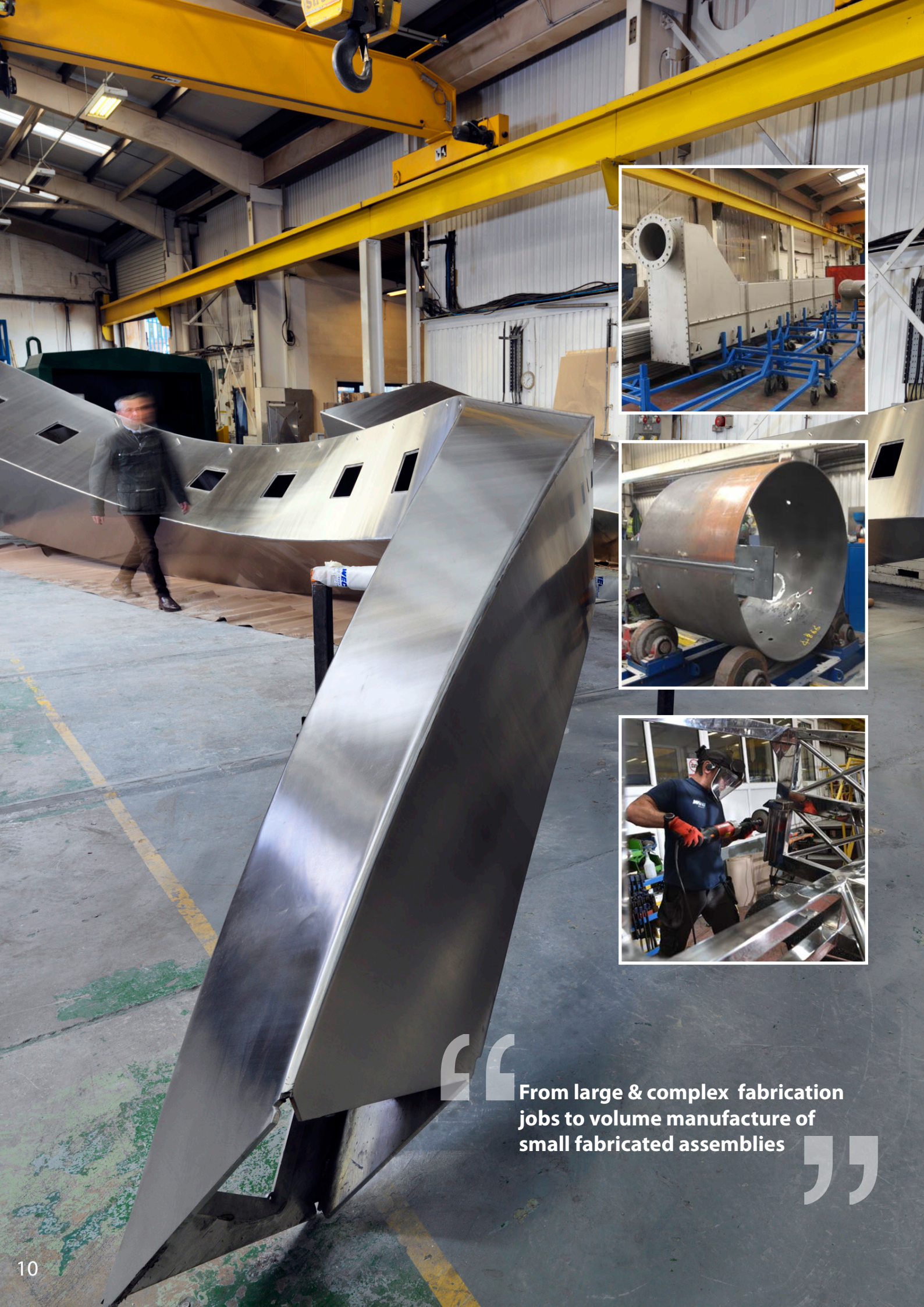
We have recently invested over £10m to build a 60,000 sq. ft. state-of-the-art new facility adjacent to our existing 33,000 sq. ft. WEC Machining factory at Walker Park, Blackburn.

The first phase of the new build was completed in 2024 with the second phase scheduled to be fully operational in 2025.

As part of this investment we have acquired four additional state-of-the-art heavy machining centres from Nicolás Correa S.A, including two 12m x 3m x 1.5m Correa Axia Travelling Column machines and two 12.5m x 5m x 2m Correa Fox M Gantry Milling machines.







“

From large & complex fabrication jobs to volume manufacture of small fabricated assemblies

”





## SPECIAL PROJECTS



### WEC Special Projects

Our Special Projects division was set up in 2008 as part of our ongoing expansion with an initial focus on stainless steel fabrication, as well as commercial diving chambers, street furniture and volume production work.

Operating from a 24,000sq. ft. facility comprising of 2 large fabrication bays, the division has gone from strength to strength over the years, building a wide customer base across multiple key industries.

Working alongside our main fabrication division, WEC Special Projects now specialises in handling bespoke stainless steel, aluminium and mild steel fabrication projects up to 30 tons in weight, from 1 off requirements to small, medium and large batch production work.

Our operations are complemented by investments in state-of-the-art pyramid rolls and sub arc welding machinery, which allow us to fabricate a wide array of vessels in both mild steel and stainless steel.

Accredited to ISO9001:2015, EN1090, EN15085-2, ISO 14001, ISO 45001 and ISO 3834-2 (to name but a few), Quality is at the heart of our operations and our team always strives to measure up to the "Right First Time, Every Time" ethos.

[www.wec-group.com](http://www.wec-group.com)

### Food Processing Industry

Over the years, WEC Special Projects has worked with many food processing OEMs, regularly handling large food grade stainless steel contracts for chutes, hoppers, baking ovens, food processing machinery, packaging machinery, catering equipment, conveyor systems, etc.

### Architectural Metalwork

We offer a specialist fabrication service to architectural firms and street furniture companies, regularly manufacturing sculptures, canopies, specialist cladding, bench & seats, planters, etc. We regularly work with stainless steel and corten steel to produce striking pieces of public art.

### Airport Ground Support Equipment

Our Special Projects division benefits from years of experience fabricating a wide range of Airport equipment including passenger steps, cargo and luggage conveyor systems, or cargo loaders to name but a few.

### Commercial Diving & Hyperbaric Chambers

We also manufacture diver's decompression chambers to BSEN5500 Cat 1 Vessel standards and various heat exchangers to ASME standards. We provide 3rd party notified body inspection, qualified NDT testing and hydrostatic/air testing.



Conveyor Systems



Stainless Steel Hoppers





**“Dynamic waterjet cutting...  
... cut any material up to 200mm thick”**





**WATERJET**



## WEC Waterjet - Dynamic Waterjet Cutting

WECJet, is our specialist waterjet cutting division.

Utilising the latest cutting technology, WEC Waterjet is a great addition to the Group's already extensive range of subcontract engineering services. Based at a 17,000 sq. ft. factory in Blackburn, Lancashire, WEC Waterjet has been set up to complement the Group's existing laser cutting and machining divisions, offering cutting services on a broader range of material and thicknesses.

Heavy investments in industry leading dynamic waterjet technology mean that we can offer machined tolerances and quality to the UK's highest standards. The use of specialist 3D & computerised motion control software enables WEC Waterjet to produce highly complex shapes, and the capacity of waterjet cutting any materials up to 200mm thickness with a bed size of up to 12m x 3m bed and an accuracy that matches machined tolerances of  $\pm 0.1\text{mm}$ .

Thanks to our capability of waterjet cutting armoured plate and composite materials, WEC Waterjet has generated new opportunities for the Group in a broad range of industries including aerospace, defence, offshore, automotive, formula 1, construction, engineering, and oil & gas to name but a few.

**Cut ANY material up to 200mm thickness!**

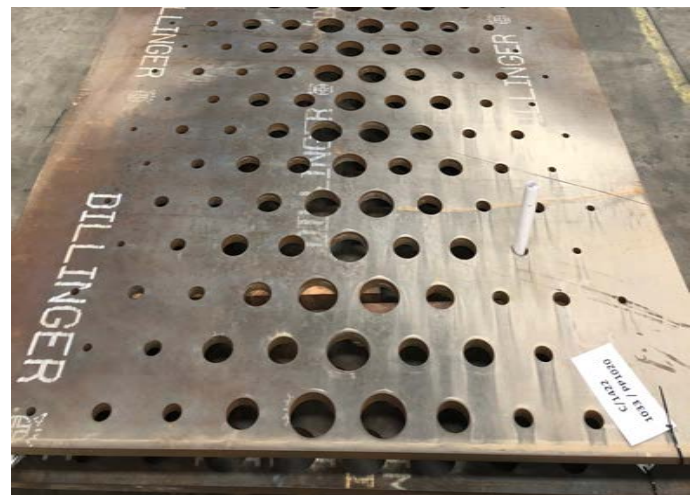
[www.wecjet.com](http://www.wecjet.com)



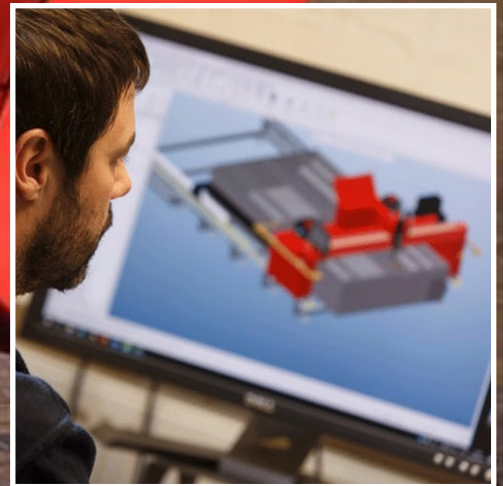
Copper	Acrylic	Glass	Granite
Brass	Plastics	Fibreglass	Limestone
Bronze	Carpet	Carbon Fibre	Marble
Carbon / Mild Steel	Cork	Wood	Slate
Stainless Steel	Foamex	Leather	Ceramics
Iron	Rubber	Silicone	Aluminium
Armoured Steel	Composite Metals	Bullet Proof Glass	Dibond

### Benefits include:

- > High precision cutting tolerances
- > Reduce cutting time by up to 70%
- > High repeatability
- > No heat affected zones (HAZ)
- > Reduce waste materials
- > Massively reduced set-up costs
- > Burr free finish even with intricate designs







“ High Definition Multi Bevel Plasma  
Cutting up to 10m x 2.5m x 50mm ”





## PLASMA



### WEC Plasma - High Definition Multi Bevel Plasma Cutting

Set up in 2021, WEC Plasma is the newest division of WEC Group.

Utilising the very latest Multi Bevel High Definition Plasma Cutting technology, WEC Plasma is a great addition to the Group's already extensive range of subcontract engineering services.

Based at our WECJet division's 17,000 sq. ft. factory in Blackburn, Lancashire, WEC Plasma has been set up to add value to our fabrication operations and also improve our subcontract cutting capacity for thick profiles.

With maximum cutting capability of up to 10m x 2.5m, our new plasma cutter can process Mild steel, Stainless Steel & Aluminium plates up to 50mm thick.

Our high definition plasma machine is fitted with a fully rotational bevelling head which allows us to cut components with a range of bevel details suitable for straight and radius edge weld preps, countersinks and a range of other component specifications. This covers V, A and Top-Y style cuts with  $\pm 50^\circ$  limits.

This allows us to significantly reduce or eliminate secondary machining operations, offering huge savings to our customers.

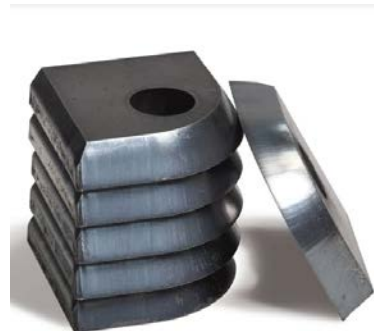
[www.wec-group.com/plasma-cutting.html](http://www.wec-group.com/plasma-cutting.html)

In addition to cutting parts with outstanding contour quality, our new plasma cutting machine is fitted with "true hole" technology for 3mm to 25mm mild steel whilst still producing excellent holes in thicknesses above this.

Our multi bevel machine also has an "easy marking" capability which enables plate marking for part numbers, bending lines or marking out for assembly.

### Plasma Cutting Benefits include:

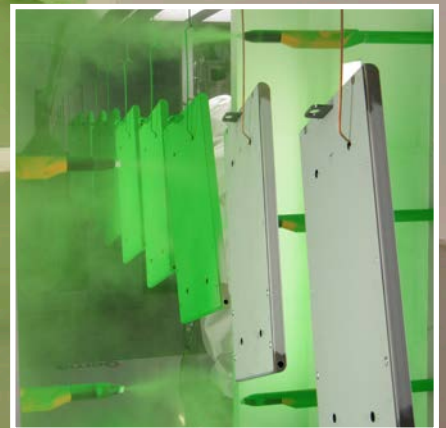
- > Excellent hole cutting performance in small and medium thicknesses of Mild Steel
- > Large format cutting Capability
- > Weld Preps & Bevel Cutting Capability
- > Cheaper cutting method than Laser & Waterjet Cutting
- > Cutting of high-strength structural steel with lower heat input than oxy cutting
- > High cutting speeds







**“ WEC Powder Coating boasts a 4 stage in-line pre-treatment plant, 2 automatic reciprocators with 6 powder guns and a 90% powder recovery system! ”**







## POWDER COATING



### WEC Powder Coating & Shot Blasting

WEC Powder Coating is one of the newest divisions of WEC Group Ltd, offering sub-contract powder coating services nationwide.

The division has been launched as a way of strengthening our supply chain, and our highly skilled, in-house powder coating team has many years' experience in the industry.

Thanks to our investment in the latest technology, we are able to offer a high-end service to our extensive customer list across a wide range of industries including rail, automotive, nuclear and aerospace to name but a few.

Our state-of-the-art powder coating system boasts a 4 stage in-line pre-treatment plant, two automatic reciprocators with six powder guns and a 90% powder recovery system. The recovery system ensures the process is extremely cost-effective and environmentally friendly.

The range of colours available is virtually unlimited, and we also offer shot blasting and wet paint spraying services with a range of standard RAL colours.

### Powder Coating Benefits:

There are many benefits of powder coating. Powder coated surfaces are more resistant to chipping, scratching, fading, and wearing than other finishes, meaning it's extremely durable. The process is also environmentally friendly as virtually no pollutants are released into the air.

### Shot Blasting

We also offer a shot blasting service to complement our powder coating division. We have the capacity to shot blast components up to four metres long and two metres wide and use the finest abrasives to ensure the perfect finish.

We also have additional shot blasting capabilities of up to 15m long x 6m wide x 4m high at our Rotherham facility which is ideal for large scale projects.

### Wet Painting

We also offer wet painting of components up to 20m long x 6m wide x 5m high at various sites.





“ Providing fabrication, profiling and precision engineering services to the rail industry for over 40 years ”







**RAIL**



WEC Group has been providing fabrication, profiling and precision engineering services to the rail industry for over 40 years.

We are also a leading force in providing design, fabrication and installation of signal structures and gantries, electrification projects (OLE, main steel and small part steel), CCTV products and rolling stock metalwork.

Offering a one-stop-shop service for our customers in the rail industry, we are capable of taking projects right through from the initial design stage to the manufacture and installation of the completed product.

#### **Rolling Stock Metalwork**

WEC Group delivers high-quality rolling stock metalwork to large Rail OEMs and Prime contractors such as Bombardier Transportation.

We also carry rail specific materials such as approved earth bonds and fasteners and work closely with world-class component manufacturers to ensure the highest level of quality.

We are an approved aluminium welding supplier to Bombardier Transportation, specialising in the manufacture of undercarriage and interior parts including:

- |                         |                           |
|-------------------------|---------------------------|
| > Inter-Ends            | > Chassis Components      |
| > Electrical Enclosures | > Undercarriage Framework |
| > Body End Cubicles     | > Cab & Bogie Structures  |
| > Under-Frames          | > Body Shell Components   |
| > Interiors             | > Bolsters                |
| > HVAC                  | > Fuel Tanks              |

#### **Signal Structures**

We specialise in signal structures, straight post signal platforms, gantry and cantilever type structures for the railway which are all designed with the view of 'ease of installation'. Our highly skilled in-house team of designers offer Form A, Form B, structural calculations and Cat 2 checks.

#### **Electrification / OLE Structures**

We are actively involved with rail electrification contracts and are a leading manufacturer of overhead steel poles for light rail transit systems and Overhead Line Electrification (OLE). We manufacture and supply Single and Two Track Cantilever, Portals and Anchor Portals as well as Twin Track Cantilever Bridges for some of the biggest rail contractors in the UK.

#### **CCTV**

Our CCTV products are used all over the UK Rail Network and help prevent vandalism and trespassing on the railway. Our products can be found on most major station platforms, station car parks and signal crossings. We also offer a wide and varied range of outdoor rail side cabinets, from standard off the shelf products to those tailor made to specific customer requirements.

#### **Quality Accreditations**

Due to the critical nature of the products we manufacture, we are accredited to EN 15085, ISO 9001:2015, BS EN 1090, and adopt the FAI approach in all we do.

[www.wecrail.com](http://www.wecrail.com)





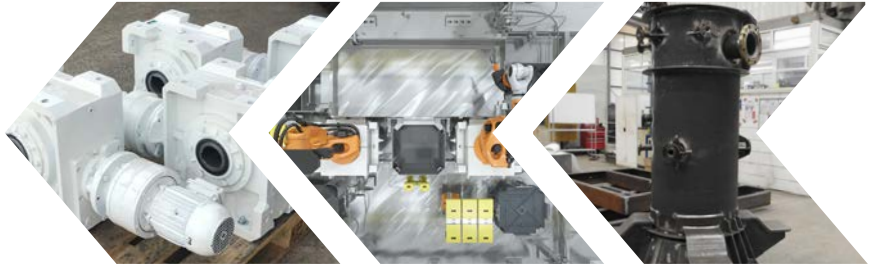
“

**We offer fabrication support for major nuclear decommissioning projects in the UK as well as for newly constructed nuclear power plants**

”







WEC Nuclear is one of the UK's leading suppliers of fabrication and contract manufacturing services for the Nuclear industry.

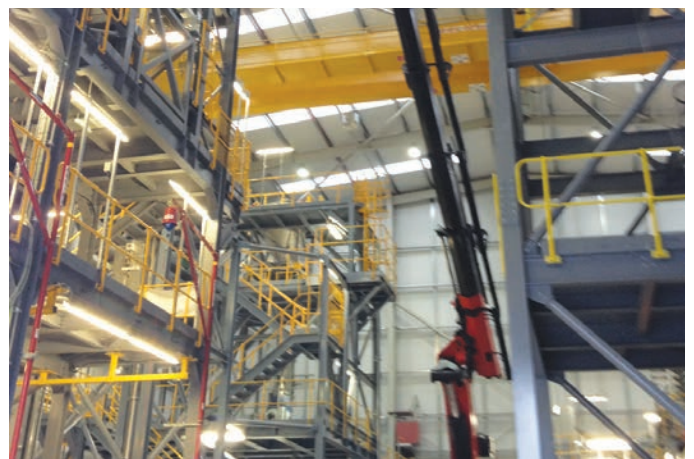
Our specialist division has gained extensive experience supporting waste management and decommissioning projects over the last 20 years.

With our main manufacturing site located in Darwen, Lancashire, we specialize in fabricating safety-critical carbon steel and duplex/super duplex stainless steel projects. Quality is at the core of everything we do and we are accredited to all major applicable standards, including ISO 9001:2015, BS EN 1090, ISO 3834, ISO 14001 Environmental, and ISO 45001:2018 Occupational Health & Safety Management Standard, .

With a highly skilled workforce, we work to a 100% right first time ethos and provide heavy engineering and large fabrication services for both nuclear powerplant new builds and nuclear decommissioning sites. We use detail design, 3D solid modeling techniques, lifetime quality records (LTQR), and Non-Destructive Testing (NDT) methods.

Past and current projects have included:

- Containment Vessels
- Nuclear Pressure Vessels
- Fluorine Cells
- Reactors
- Lifting Frames & Lifting Beams
- Super Duplex Waste Handling Tables
- Hoppers & Chutes
- Complex Structural Steelwork for Nuclear Rigs & Waste Handling Facilities







“ WEC CCTV are world leaders in the CCTV mounting industry today ”







**CCTV**



## WEC CCTV

WEC CCTV is a world leading manufacturer of CCTV mounting products with over three decades of experience in the design, production and manufacture of CCTV columns, poles and towers from 4m - 18m in height. We produce a wide range of products and small ancillary items such as brackets and anti-vandal protection cages.

With a large number of standard items always kept in stock, we can provide products quickly and efficiently. We are a competitive source of supply for your CCTV mounting products and, coupled with a highly skilled engineering team, this ensures we are well positioned to meet the current and future demands of the CCTV industry.

Our engineers use computer aided design (CAD) facilities dedicated to the closed circuit television and associated industries and are able to channel their vast knowledge and skills to produce high quality camera mounting solutions.

Constant self-investment programmes have enabled us to acquire the very latest in laser cutting and metal forming technology. Our vast array of modern machines ensures that we remain market leaders by providing customers with the highest quality and accuracy manufactured by any company today.

The transport fleet at WEC not only offers a delivery service, but also provides a column "delivery and placement" service. We currently deliver and place columns up to 18 meters in height onto prepared bases throughout the UK and Europe.

Deliveries can be made to suit your needs. If the situation arises where you require evening, weekend or night time deliveries, our efficient transport department is always there to liaise with you.

Our bespoke services team are experts in helping you overcome difficult and awkward mounting solutions. We are able to work from all types of drawings, from photographs and simple sketches through to full engineering drawings. Production takes place seven days a week to ensure all special orders are on site with the minimum of delay.

## Export

We also have a dedicated export division understanding overseas installations and offering support from initial tender stage until project completion including supporting design documentation, full export documentation and shipping management.

Full logistic solutions are available to cover every region of the world by all modes of transport. Whether your requirements are by land, sea, air or multi-modal, we offer a professional service from origin to the final destination.

## Highways

We work closely with the Highways Agency and are accredited to supply motorways structures in accordance with the National Highway Sector Scheme 6. This encompasses the design, manufacture and installation of structures for camera mounting, including structures for traffic signals and camera systems.

[www.wec.uk.net](http://www.wec.uk.net)

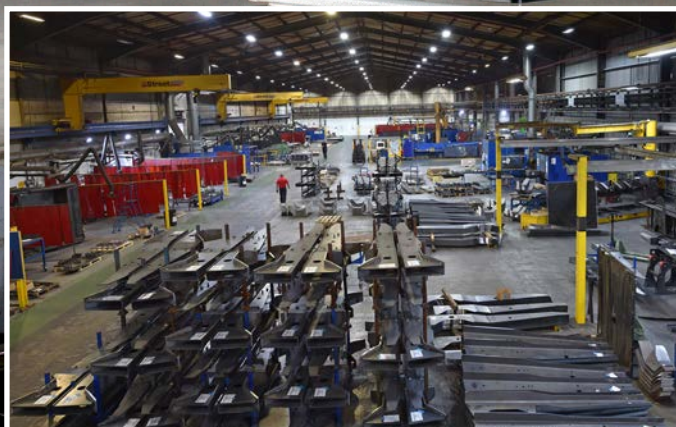




“ MTL specialise in cutting, bending, machining and welding parts in large format and high strength materials ”

SVIKEN

SIAMATIK







## MTL Advanced Ltd

MTL Advanced is our Yorkshire-based steel engineering and contract manufacturing company which operates from a 367,000 sq. ft. factory in Rotherham.

With an impressive range of state-of-the-art technology and equipment available, MTL acts as the manufacturing arm of large OEM's from leading industries such as defence and security, construction and quarrying, offshore & renewable energy, recycling and rail. MTL constantly invests in the latest cutting edge technology as a way of ensuring our capability and capacity consistently outperforms our competition.

MTL specialise in contract manufacturing and is one of the few companies in the UK to offer a fully comprehensive in-house service, including cutting, pressing, fabrication, machining, shot blasting, painting, and assembly.

With the capacity of cutting parts up to 14m long x 3.3m wide x 30mm thick, MTL's new LVD Taurus is the largest 12kw fiber laser in the UK. It is capable of cutting both chamfers and weld preps of up to +/-45 degrees, improving efficiency and productivity - reducing costs and lead times for our customers.

Thanks to investments in the latest welding equipment, we currently have 16 robotic welding cells and various automated welding systems in-house.

We have also recently invested in state-of-the-art shot blasting and wet painting facilities with the capability to shot blast components up to 15m long x 6m wide x 4m high and paint components up to 20m long x 6m wide x 5m high.

We hold a vast range of stock plate material at our state-of-art-facility to meet our clients' needs, be it for meeting a ballistic threat level specification or relining a bucket from Hardox plate. Our relationship with the major steel mills in both Europe and the USA allows us to respond quickly to our customers' requirements using some of the best materials on the market.

As a certified Hardox Wearparts supplier, plates are readily available for a wide range of categories in numerous specifications and grades, up to 12 metres long, 3.2m wide and 200mm thick.

We are also the UK's first and only Strenx Certified Fabricator, demonstrating our expertise producing high quality parts and assemblies with this high strength steel.

We stock the following materials:

- > Armour Plate
- > Hardox Wear Plate
- > High Strength Steel
- > Carbon Steel
- > Aluminium
- > Stainless Steel
- > Corten Weathering Steel

**ARMOX®**  
PROTECTION PLATE

**HARDOX®**  
WEARPARTS

**STRENX™**  
PERFORMANCE STEEL

MTL has recently completed the build of a new 67,000 sq. ft. Advanced Manufacturing Centre, adjacent to our existing 300,000 sq.ft. site in Rotherham. This expansion represents a substantial £10 million investment towards the future growth of MTL.

As part of this new investment, we have acquired several pieces of cutting-edge equipment. Among the new machinery is a large format LVD press brake, two Doosan/DS Solutions auto pallet horizontal machining centres, and seven Yaskawa robot welding centres. As part of this investment, MTL also installed a state-of-the-art fully automated welding line for high volume and complex high strength steel structures.

[www.mtladv.com](http://www.mtladv.com)







“ Fully automated  
laser cutting ”





## HTA Group

HTA Group is our Coventry-based subcontract manufacturing company specialising in laser cutting, CNC punching, CNC folding and fabrication.

Established in 1973, the company operate from a 95,000 sq. ft. state-of-the-art manufacturing facility and have made large scale investments in some of the world's most sophisticated machinery.

HTA is an approved Tier 1 supplier to numerous global OEM's across a wide range of industries including automotive, oil & gas, defence, rail, marine, nuclear, petrochemical and many more.

The company works with customers on prestigious projects from one-off orders through to high volume production, bringing the same level of expertise and professionalism to each one.

HTA's capacity also includes 7 CNC press brakes capable of folding up to 4000mm x 230t as well as 21 production welding cells, 1 robotic welding system and 5 prototype fabrication cells.

[www.htagroup.co.uk](http://www.htagroup.co.uk)

## Automated Laser Cutting

HTA's laser cutting machines operate 24 hours a day and are the most technologically advanced machines on the market. The machinery line-up includes 4m x 2m fibre laser cutting machines with automated storage, loading, finished part removal and sorting which have been reported to be unparalleled in the country.

## CNC Punching

In addition, HTA's CNC punching capability enables the punching of components up to 3000mm x 1250mm with embossing, forming, countersinking, thread forming and engraving.

## Powder Coating

We now also offer powder coating as part of our range of in-house manufacturing processes.

## Accreditations

Accredited to ISO 9001:2015 along with EN 15085 for rail and fully compliant with BS EN 1090 EXC 4, HTA ensures the needs of customers are always met to the UK's highest standards.







“Constant investments in the latest technology ensure our capability and capacity consistently outperforms our competition”





Sherburn Metalwork Ltd is our Yorkshire-based fabrication company specialising in fabrication, sheet metalwork and robotic welding.

With an exhaustive range of state-of-the-art technology and equipment available on tap, we are ideally placed to cater for a diverse customer base with a broad range of demands and requirements, especially in the automotive and construction industries. Our highly experienced welders are fully trained in various coded welding disciplines, and we also have state-of-the-art robotic welding facilities on-site which are operated on a 24 hour basis, meaning we are able to provide a quick turn-around, alongside an in-house jig design and build service.

Operating from purpose built facilities, we can carry out large batch work or individual one-off bespoke pieces and projects. We have the capacity to provide same and next day services and we are able to carry out entire projects in-house right through from the initial consultation to the assembly and installation of the completed product.

We work to ISO 9001:2015 standards with PPAP quality control and conform to the requirements of BS EN 1090 EXC 4 CE/ UKCA marking, a guarantee that you're in the right hands for all your metalwork and fabrication requirements.

## **In-house Laser Cutting & Folding**

We have recently invested in the very latest fibre laser and press brake technology and can now offer a laser cutting & folding service to our customers, as well as sheet metal fabrications.

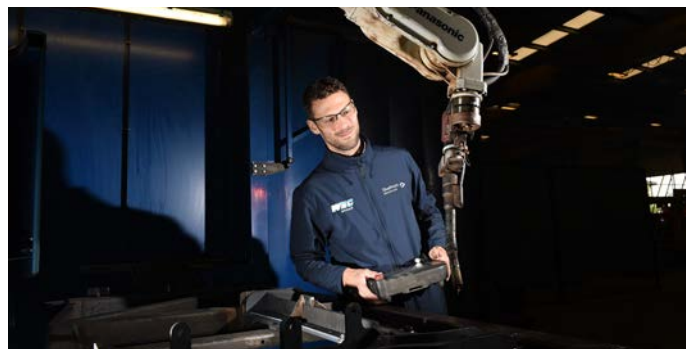
## **Shot Blasting & Wet Painting**

We also offer an in-house shot blasting and wet painting services for components up to 15 x 6m x 4m.

## **Automotive**

We operate a quality control system to ISO 9001:2015 and BS/ EN 1090 for structural fabrications and benefit from a wealth of experience manufacturing parts for the automotive industry.

[www.sherburn-metalwork.com](http://www.sherburn-metalwork.com)





“We continuously invest in the latest laser cutting technology and in training our staff”



**\*NEW\* 24KW Flat Bed Laser**





## 5750 Components

WEC Group acquired Liverpool-based laser cutting company 5750 Components in October 2008.

Established in 1994, 5750 Components provides precision CNC laser processing services on a subcontract basis to a range of industries including automotive, environmental, MoD, electronics and retail to name but a few.

We are conveniently located near the M57 and M62 as well as the main A580 Liverpool to Manchester East Lancashire Road.

We continuously invest in the latest laser cutting technology and in training of staff to enable 5750 to remain one of the top specialist laser subcontractors in the North, as well as passing cost savings onto our growing customer base.

We have recently invested £4m in a new 33,000 sq. ft. facility, as well as state-of-the-art fibre laser cutting machines, including 5750 Components' first tube laser and two new press brakes. Since moving premises, we also now have more assembly space and additional welding bays.

## Capabilities

Our 24Kw fibre Trumpf TruLaser offers high speed cutting of components up to 4m x 2m. It comes fully fitted with an automated LiftMaster and enables us to offer high speed nitrogen cutting on a range of materials, as well as the ability to cut up to 40mm stainless steel, 25mm mild steel and aluminium.

Our new Adige LT8.10 fibre tube laser now enables us to cut round tube and box section up to 240mm diameter and 8.5m length as well as angles, chanel, and most open profiles.

Our 4 state-of-the-art CNC press brakes also have the capacity of 4.2m folding length and 220 tonne press capability, with forming capabilities ranging from thin sheet to plate. As a way of maximising our laser cutting productivity and reducing cutting costs, we have adopted a 24/7 working pattern to ensure our lead times remain competitive.

We have several state-of-the-art laser processing centres, employing the flying optics principle, exclusively available at 5750. This equipment enables complete flexibility in two dimensions without the need for expensive tooling.

[www.5750components.co.uk](http://www.5750components.co.uk)







“

**Stainless steel public art is our area of expertise, ranging from spiral staircases to complex sculptures and bridges**

”





Specialist metal fabricators and consultants



## m-tec

m-tec specialises in architectural metalwork providing a service aimed at the public art sector. Working with architects, public artists and regeneration consultants, we offer fabrication, design, consultation and installation services.

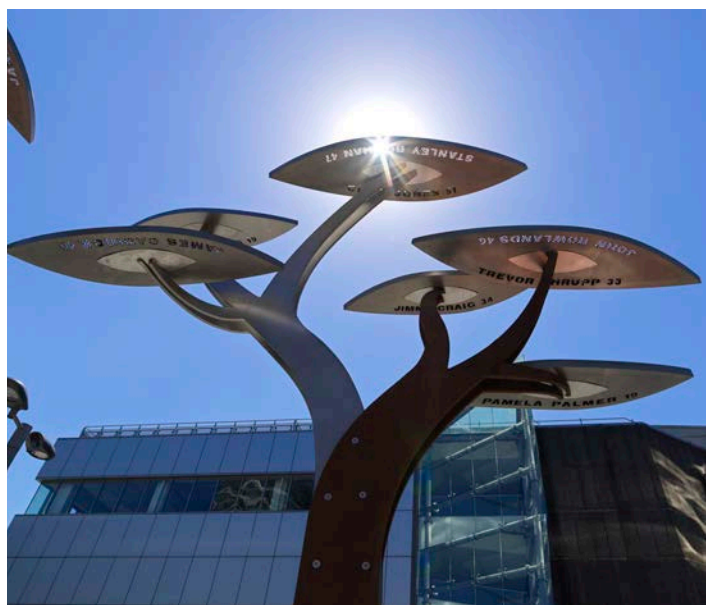
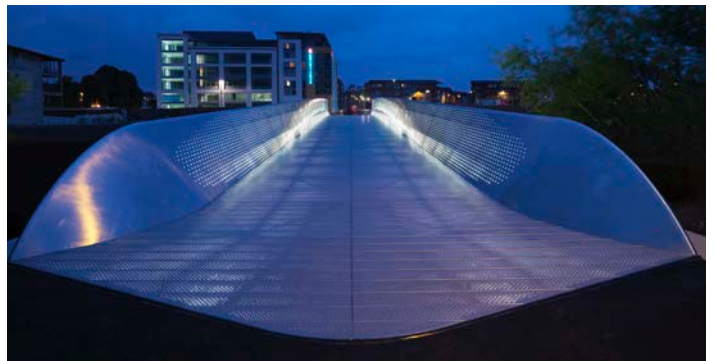
Stainless steel public art is our area of expertise, ranging from spiral staircases to complex sculptures and bridges. At m-tec, we have the necessary skills and capability to design, manufacture and install spectacular pieces of stainless steel architecture across the UK and overseas.

As a leader in bespoke metal fabrication, we have been involved in numerous projects including the design, manufacture and installation of the Mead's Reach Bridge at Temple Quay in Bristol. Weighing in at 75 tonnes and spanning 60 metres, the bridge was part of a £200 million pound regeneration project for the Temple Quay area.

[www.m-tec.uk.com](http://www.m-tec.uk.com)

## Other projects include:

- Sousse Bardo Memorial, Cannon Hill Park, Birmingham
- Birmingham 21 Memorial, New Street Station
- The Arches of Oman, Royal Opera House, Muscat
- Pooley Bridge, Cumbria
- WW1 Memorial Arch, Folkestone
- The Swirl, Didcot
- Rotating Wind Shelters, Blackpool
- Millennium Needle, St. Helens
- Tower of Light, Portishead
- Discovery Sculpture, Northampton
- South Beach Car Park Entrance, Blackpool
- The Seed Sculpture, Manchester
- The Braid Sculpture, Blackburn
- Special Canopies, Blackpool Central Gateway
- Flight of Fancy, Hucknall, Nottinghamshire
- The Wave Sculpture, Blackpool
- Minaret-like Sculpture, Brick Lane
- The O2 Ribbon, Telefonica Headquarters, Slough
- Airburst Sculptures, BAE Systems (various sites)
- The Concorde Nose Sculpture
- The Trinity Mirror, Irvine







“ Experts in the fabrication of bespoke  
steel banded fuel tanks ”





## ATS (Advanced Tank Solutions)

ATS (Advanced Tank Solutions) is one of the newest subsidiaries of WEC Group. Operating from Darwen, Lancashire, ATS Tanks boasts a team of highly skilled in-house fabricators with over 40 years of valuable experience in the industry.

We collaborate with our customers to design and build bunded fuel tanks to meet your needs. Each tank is manufactured by our skilled team of professionals and delivered direct to our clients' sites.

ATS Tanks offer a wide range of bunded fuel tanks to meet our customers diverse needs. We manufacture rectangular integrally bunded tanks, with a variety of cabinet options, between 250L - 1000,000L. These tanks can be used for a variety of purposes, such as standby power and fuel for vehicles & plant.

Our above-ground cylindrical tanks are available as bunded or single-skin units, both vertical and horizontal. Typically to BS799-5:2010 type A-G, we are able to build in accordance with other standards if required.

Designed for a static roof loading of up to 75ft, our structurally reinforced generator slab tanks can also be specified for use with or without a separate drop-over canopy.

For many customers, our standard-sized tanks provide an excellent solution, but we also understand that sometimes individuals have distinct requirements that demand personalised attention. We are pleased to offer our bespoke service, collaborating with customers to design and manufacture tanks that precisely meet their unique requirements and preferences.

We also benefit from a wealth of expertise manufacturing bespoke stainless steel water tanks as well as chemical tanks to name but a few.

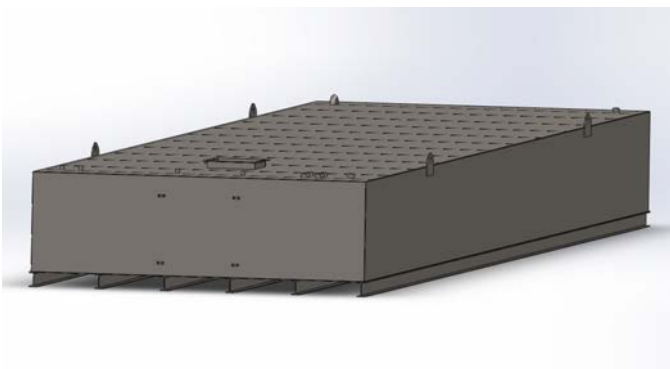
[www.ats-tanks.com](http://www.ats-tanks.com)



**Rectangular Bunded Tanks**



**Cylindrical Tanks**

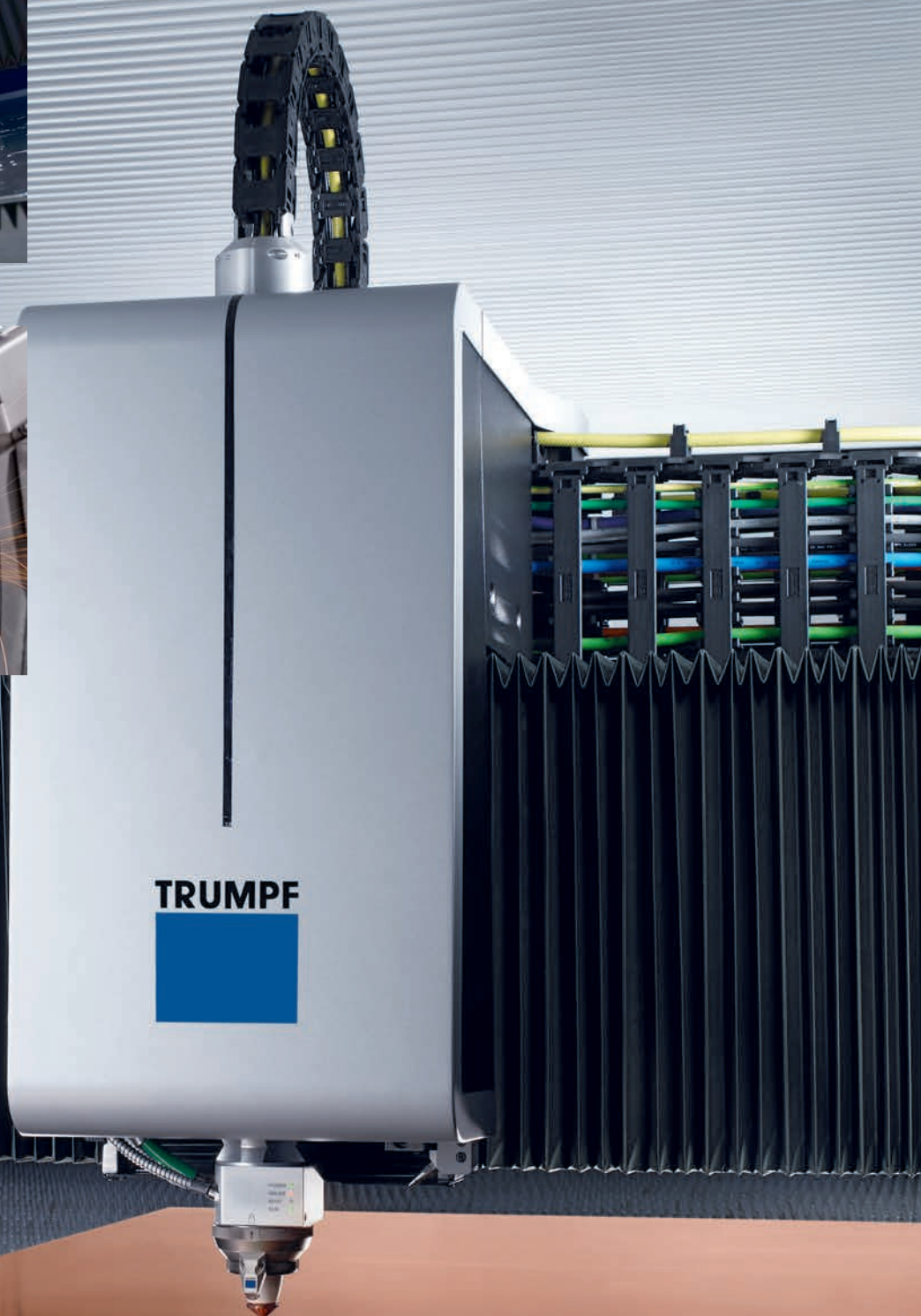
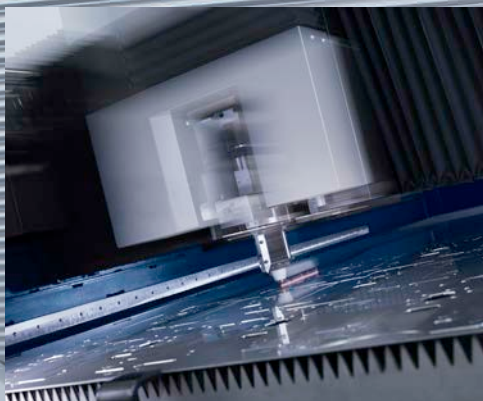


**Generator Slab Tanks**



**Bespoke Fuel Tanks**





“

**For all your Laser Cutting and  
Sheet Metal Fabrication  
requirements**

”



# LASER I PROFILES



## Laser Profiles

Laser Profiles is the newest addition to WEC Group, located in Wimborne, Dorset. This acquisition is part of WEC Group's long-term growth strategy to extend its reach across all corners of the UK and reinforce their market leading position in the contract manufacturing sector.

Laser Profiles has established itself as a leader in providing bespoke laser cutting solutions to various key supply chains in the South of England. This new partnership is designed to leverage the unique strengths of both companies, optimising production capabilities and enhancing service offerings to clients across various industries.

As WEC Group's first manufacturing site in the South of England, Laser Profiles has allowed us to gain access to new target markets and opened the door to further growth.

Operating from a purpose-built 15,000 sq. ft. unit, Laser Profiles boast an impressive array of cutting-edge technology, including a fully automated Trumpf fibre laser, which offers high-speed cutting with exceptional quality.

They also operate an Adige fibre tube laser, enabling them to supply round tubes, box section, angle and channel profiles to their customer base. Additionally, their capabilities extend to a full suite of in-house folding and sheet metal fabrication services.

Using the very latest fiber laser technology, Laser Profiles enjoys an enviable reputation for quality and reliability, now operating 24/7 to ensure prompt and reliable deliveries, with 24-hour turnaround premium service for your urgent jobs.

[www.laserprofiles.co.uk](http://www.laserprofiles.co.uk)







THE BRITISH ARMY AWARD FOR  
LARGE EMPLOYER OF THE YEAR



**Apprenticeships**

National Awards 2024  
Regional Winner



**Apprenticeships**

National Awards 2024  
National Highly Commended





### WEC Engineering Academy

The WEC Group Engineering Academy provides individuals across the UK with an opportunity to gain welding and fabrication, CNC machining and sheet metalworking skills, whilst producing the highly-skilled workers the company needs to fuel its ongoing expansion.

Our apprentices have constant access to state of-the-art equipment, enabling them to learn and utilise the most modern practises and techniques whilst mixing with staff to get a real taste for the workplace. All of our first year welding apprentices receive the high-end coded welding BS EN 287 qualification with a 100% pass rate.



The Academy is one of the few TWI (The Welding Institute) Certified Welder Training Centres in the UK, enabling us to provide beginner and advanced welder qualifications in-house, and our Training & Development Manager is one of just 50 globally recognised CSWIP certified Master Welding Instructors.

The Academy is a recognised Lincoln Electric Centre of Welding Excellence, the only one outside of the US.



### Community Projects

Apprentices benefit from involvement in community projects throughout the year, working with local authorities, charities and residents whilst developing their skills sets. Recent work has seen students create a spitfire plane memorial sculpture, a stainless steel statue in tribute to famous artist LS Lowry, and an 8 metre research space rocket for Starchaser Industries.

To celebrate the success of our apprentices, an annual Apprentice of the Year ceremony is held to recognise their achievements. Attended by distinguished guests, family,

industry and education representatives, the awards ceremony is the highlight of the year for our apprentices.

### Award Winning Apprenticeship Scheme

WEC Group has repeatedly been recognised in the Top 100 Apprenticeship Employers list, identifying excellence in businesses that employ apprentices and showcases the breadth of employers who offer apprenticeships.

The Academy has also recently won the Large Employer of the Year title at the National Apprenticeship Awards, as well as various six regional titles in the past eight years.

Every year WEC apprentices are entered into the prestigious WorldSkills UK competition, and we run welding/fabrication master-classes throughout the year to prepare them for it. Our apprentices have been trained to such high standards that they have won gold three years in a row, on top of several silver and bronze medals in Construction Metalwork, recently leading to WEC Apprentices representing the UK on the global stage of the competition.



### Apprenticeships with WEC Group

There are various apprenticeship schemes available within the group including; Welding & Fabrication, CNC Machining, Laser & Press Brake operation, and office based roles such as, Business Administration, IT and Marketing to name but a few.





WEC Group prides itself on providing a high quality service for all engineering and fabrication services. Our primary objective is to meet and surpass the needs and expectations of our customers.

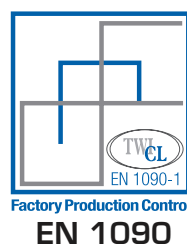
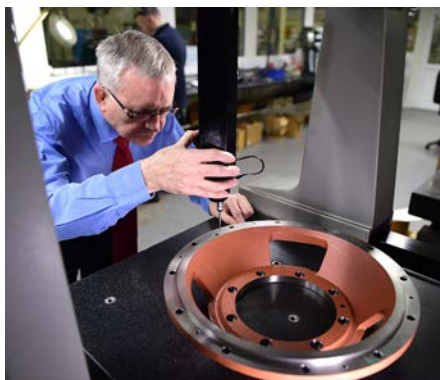
We have a wealth of experience in providing engineering and fabrication services to a wide customer base in a range of industry sectors including aerospace, defence, nuclear, marine and oil & gas.

WEC Group operates within ISO 9001:2015 requirements, is AS 9100 Aerospace Accredited for CNC machining, works to ASME Coded Welding Standards and has achieved full compliance with BS/EN 1090 CE Marking - demonstrating our ability to consistently deliver high quality products conforming to customer demands, and applicable statutory and regulatory requirements.

WEC Group also holds the ISO 45001 (Occupational Health and Safety Management standard) alongside the ISO 14001 (Environmental) certifications, which enables us to service the requirements of our clients in key industries.

Our quality system is backed up by online/offline programming and our engineers are proficient with the latest CAD Technology. We endeavour to ensure we provide the best outcome for your specific project, and our highly-skilled engineers will work with you from the initial design phases right through to project completion, keeping you informed and offering advice and guidance from stage one.

WEC Group is also an EN 15085 approved supplier, which verifies the company as a trusted, quality supplier of metalwork services and fabricated assemblies for the Rolling Stock & Rail Infrastructure industries









# WEC

## GROUP

Britannia House, Junction Street, Darwen, Lancashire, BB3 2RB  
Tel: +44 (0)1254 773718  
email: [info@wecl.co.uk](mailto:info@wecl.co.uk) | [www.wec-group.com](http://www.wec-group.com)



### FABRICATION

Welding Engineering  
Spring Vale House, Spring Vale Road  
Darwen, Lancashire,  
BB3 2ES

T: +44 (0)1254 773718  
E: [fabrication@wecl.co.uk](mailto:fabrication@wecl.co.uk)  
[www.welding-eng.com](http://www.welding-eng.com)



### MACHINING

WEC Machining Ltd  
Premier Way, Walker Road,  
Walker Park, Blackburn, Lancs,  
BB1 2JU

T: +44 (0)1254 700222  
E: [machining@wecl.co.uk](mailto:machining@wecl.co.uk)  
[www.wec-machining.com](http://www.wec-machining.com)



### CCTV

WEC CCTV  
Britannia House, Junction Street,  
Darwen, Lancashire,  
BB3 2RB

T: +44 (0)1254 700200  
E: [cctvenquiries@wecl.co.uk](mailto:cctvenquiries@wecl.co.uk)  
[www.wec.uk.net](http://www.wec.uk.net)



### LASER

Laser Engineering UK  
The Technology Centre,  
Junction Street,  
Darwen, Lancashire, BB3 2RB

T: +44 (0)1254 700201  
E: [laser@wecl.co.uk](mailto:laser@wecl.co.uk)  
[www.laser-eng.com](http://www.laser-eng.com)



### WATERJET

### PLASMA

WECjet  
Premier Way,  
Shadsworth Industrial Estate,  
Blackburn, Lancashire, BB1 2PT

T: +44 (0)1254 700220  
E: [waterjet@wecl.co.uk](mailto:waterjet@wecl.co.uk)  
[www.wecjet.com](http://www.wecjet.com)



### SPECIAL PROJECTS

WEC Special Projects  
Britannia House, Junction Street,  
Darwen, Lancashire,  
BB3 2RB

T: +44 (0)1254 773 718  
E: [specialprojects@wecl.co.uk](mailto:specialprojects@wecl.co.uk)  
[www.wec-group.com](http://www.wec-group.com)



### ENGINEERING ACADEMY

WEC Engineering Academy  
Premier Way, Walker Road,  
Walker Park, Blackburn, Lancs,  
BB1 2JU

T: +44 (0)1254 773 718  
E: [info@wecl.co.uk](mailto:info@wecl.co.uk)  
[www.wec-group.com](http://www.wec-group.com)



5750 Components Ltd  
Villiers Road,  
Knowsley Business Park,  
Merseyside, L34 9ET

T: +44 (0)151 5485750  
E: [sales@5750components.co.uk](mailto:sales@5750components.co.uk)  
[www.5750components.co.uk](http://www.5750components.co.uk)



MTL Advanced Ltd  
Grange Lane, Brinsworth,  
Rotherham,  
S60 5AE

T: +44 (0)114 261 7979  
E: [contact@mtladv.com](mailto:contact@mtladv.com)  
[www.mtladv.com](http://www.mtladv.com)



Sherburn Metalwork Ltd  
12 Seafox Court,  
Sherburn Industrial Estate,  
Sherburn-in-Elmet, Leeds, LS25 6PL

T: +44 (0)1977 684478  
E: [sherburn@wecl.co.uk](mailto:sherburn@wecl.co.uk)  
[www.sherburn-metalwork.com](http://www.sherburn-metalwork.com)



HTA Group Ltd  
Units 7040-7060  
Middlemarch Business Park,  
Siskin Parkway East, Coventry, CV3 4PE

T: +44 (0)2476 516100  
E: [sales@htagroup.co.uk](mailto:sales@htagroup.co.uk)  
[www.htagroup.co.uk](http://www.htagroup.co.uk)



Laser Profiles Ltd  
Unit 3, Aerial Park,  
Uddens Trading Estate,  
Wimborne, Dorset, BH21 7NL

T: +44 (0)1202 875657  
E: [sales@laserprofiles.co.uk](mailto:sales@laserprofiles.co.uk)  
[www.laserprofiles.co.uk](http://www.laserprofiles.co.uk)



T: +44 (0)1254 773718  
E: [info@ats-tanks.com](mailto:info@ats-tanks.com)  
[www.ats-tanks.com](http://www.ats-tanks.com)



T: +44 (0)1785 711 643  
E: [info@wecl.co.uk](mailto:info@wecl.co.uk)  
[www.wec-group.com](http://www.wec-group.com)



T: +44 (0)1254 773718  
E: [m-tec@wecl.co.uk](mailto:m-tec@wecl.co.uk)  
[www.m-tec.uk.com](http://www.m-tec.uk.com)